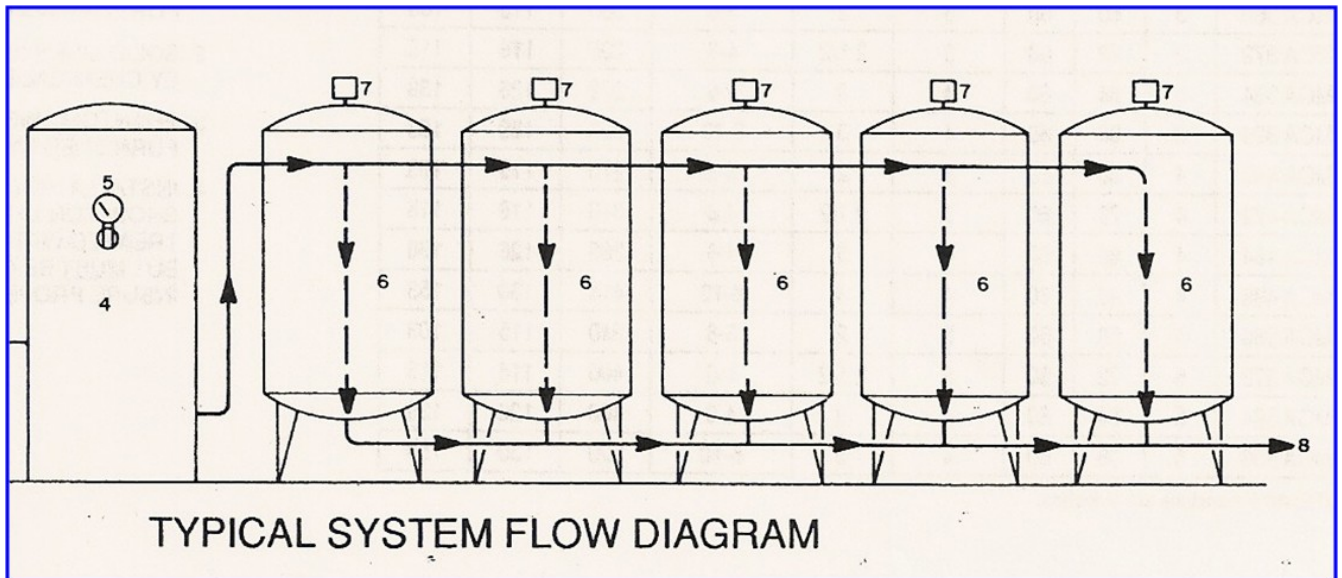


Sterling OXY3 Series

Commercial/Industrial
Iron Reduction System



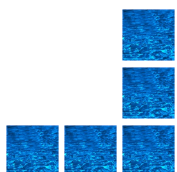
Features:

- Flow rate up to 2500 GPM
- Reduces obnoxious odors
- No chemical regenerates
- Removes iron & manganese
- Elevates pH of acidic water
- Filtered water backwash

Applications:

- Irrigation
- Mobile Home Parks
- Poultry & Livestock Watering
- Schools
- Factories
- Laundries
- Hospitals
- Housing Developments

STERLING
WATER SYSTEMS
www.sterlingwatertreatment.com



Single/Dual Tank Small Commercial Systems

- Fiberglass media tanks
- Top mounted control valve
- Designed for large homes/ small businesses

Model Number	No. of Tanks	Service Flow Rate (gpm)			Backwash Flow Rate (gpm)	Service Pipe Size (in.)	Tank Size (in.) (Dia x Ht.)	Space Req. (in.)			Ship weight (lbs)
		Cont.	Service	Peak				Width	Depth	Height	
OXY3-30	2	3	5	11	9	1	14 x 65	38	14	73	377
OXY3-40	2	4	7	14	10	1	16 x 65	42	16	73	487
DOXY3-40	4	8	14	28	10	1	16 x 65	94	20	73	974

Multiple Tank Medium Commercial Systems

- Fiberglass or epoxy lined steel media tanks

- Full flow diaphragm or electric ball valve

- Clock initiated back-washing

- Filtered water backwash

Model Number	No. of Tanks	Service Flow Rate (gpm)			Backwash Flow Rate (gpm)	Service Pipe Size (in.)	Tank Size (in.) (Dia x Ht.)	Space Req. (in.)			Ship weight (lbs)
		Cont.	Service	Peak				Width	Depth	Height	
OXY3-316	4	13	21	42	10	2--3	16 x 65	80	43	80	1,855
OXY3-416	5	17	28	56	10	2--3	16 x 65	100	43	80	2,470
OXY3-516	6	21	35	70	10	2--3	16 x 65	120	43	80	3,085
OXY3-321	4	22	36	72	25	2--3	21 x 62	100	45	77	2,735
OXY3-421	5	29	48	96	25	2--3	21 x 62	120	45	77	3,645
OXY3-521	6	36	60	120	25	2--3	21 x 62	170	45	77	4,555
OXY3-324	4	28	47	94	30	2--3	24 x 71	115	47	87	4,210
OXY3-424	5	38	63	126	30	2--3	24 x 71	142	47	87	5,610
OXY3-524	6	47	79	157	30	2--4	24 x 71	170	47	87	7,010

Multiple Tank Industrial Systems

- Epoxy lined steel media tanks

- ASME code tanks optional

- Time clock or pressure differential backwash initiation

- Filtered water backwash

- Full flow diaphragm or electric ball valves

Model Number	No. of Tanks	Service Flow Rate (gpm)			Backwash Flow Rate (gpm)	Service Pipe Size (in.)	Tank Size (in.) (Dia x Ht.)	Space Req. (in.)			Ship weight (lbs)
		Cont.	Service	Peak				Width	Depth	Height	
OXY3-330	4	44	74	147	40	2--4	30 x 60	142	67	91	6,830
OXY3-430	5	59	98	196	40	2--4	30 x 60	175	67	91	9,100
OXY3-530	6	74	123	245	40	2--4	30 x 60	210	67	91	11,375
OXY3-336	4	64	106	212	70	2--4	36 x 60	175	73	95	9,090
OXY3-436	5	85	141	283	70	2--4	36 x 60	215	73	95	12,115
OXY3-536	6	106	177	353	70	2--4	36 x 60	255	73	95	15,140
OXY3-348	4	113	188	377	125	3--4	48 x 60	226	88	107	17,365
OXY3-448	5	151	251	503	125	3--4	48 x 60	280	88	107	23,150
OXY3-548	6	188	314	628	125	3--4	48 x 60	335	88	107	28,940
OXY3-360	4	177	295	589	190	3--4	60 x 60	275	103	115	27,295
OXY3-460	5	236	393	785	190	3--6	60 x 60	340	103	115	36,390
OXY3-560	6	295	491	982	190	3--6	60 x 60	405	103	115	45,490
OXY3-372	4	254	424	848	275	4--6	72 x 60	320	115	118	40,370
OXY3-472	5	339	565	1,131	275	4--6	72 x 60	400	115	118	53,825
OXY3-572	6	424	707	1,414	275	4--6	72 x 60	480	115	118	67,280
OXY3-384	4	346	577	1,155	350	4--6	84 x 60	370	138	126	57,925
OXY3-484	5	462	770	1,539	350	4--6	84 x 60	460	138	126	77,230
OXY3-584	6	577	962	1,924	350	4--8	84 x 60	560	138	126	96,535
OXY3-396	4	452	754	1,508	500	6--8	96 x 60	400	153	130	75,230
OXY3-496	5	603	1,005	2,011	500	6--10	96 x 60	500	153	130	100,310
OXY3-596	6	754	1,257	2,513	500	6--10	96 x 60	600	153	130	125,385

